

Firmware Version Update Tool Guide

1. System Requirements

Computer	Windows computer that is connectable to the printer using USB2.0.
OS	Windows 2000 SP2 or later, Windows XP, Windows Vista, Windows 7

2. Connect the printer

Connect the printer and computer with USB2.0 cable since firmware will be update by using the computer port for output.

3. Confirm the current version

1) Turn on the Main power of the printer.

LCD displays [BOOT] and then displays the firmware version in a short period of time.

Confirm the firmware version at that time.

(If displayed firmware version is same version as you are going to update, it is not necessary to update.)

[LCD display on the printer]

BOOT

V×.××

Firmware version to update in this tool is as follows.

- JV33BS V3.40
- CJV30BS V2.30

Current firmware version

2) After complete the initial operation and display is in local mode, turn off the Sub power in front of the machine and Main power in turn.

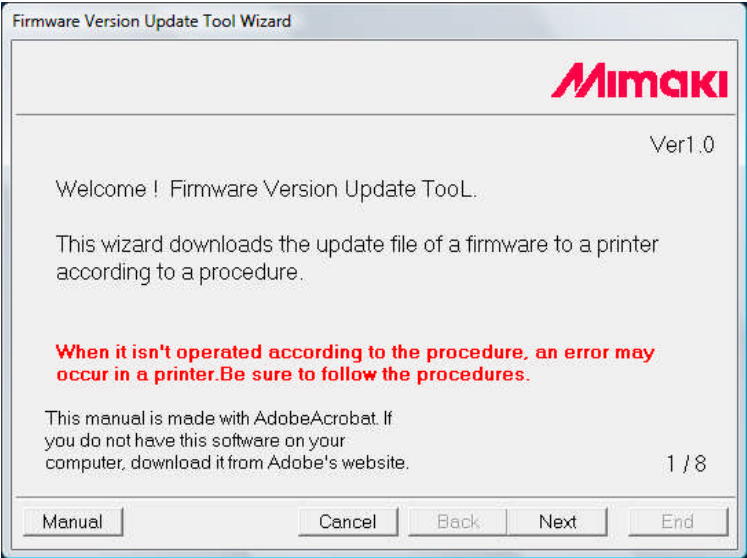
4. Update Procedure

- 1) Turn on the computer.
- 2) Double click on the downloaded "SetupXXXX_XXX.exe" icon on the desktop.

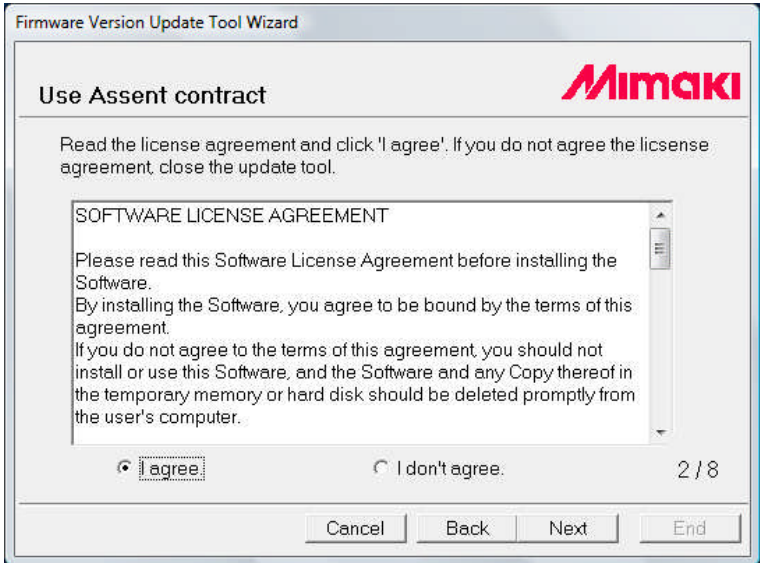
XXXX_XXX means Model name_Version



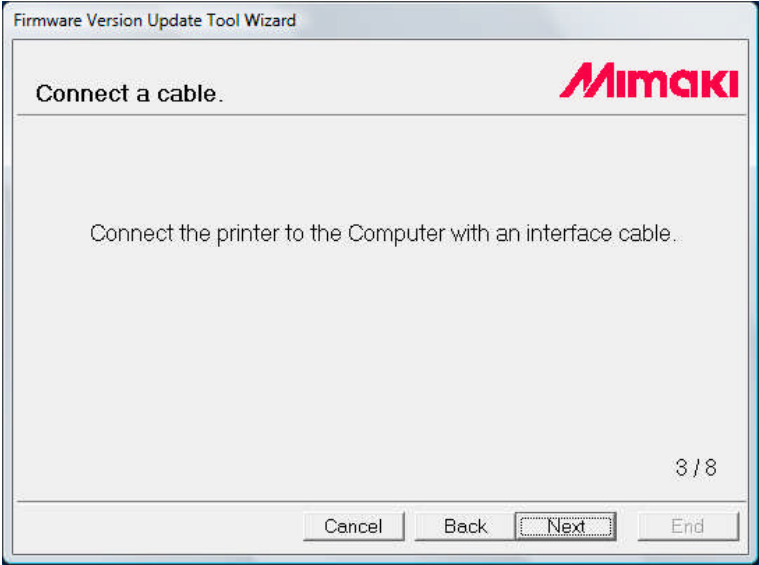
- 3) Click [Next] at the wizard screen.



- 4) Read the license agreement and select "I agree". Then click [Next].
If you do not agree the license agreement, close the version update tool.



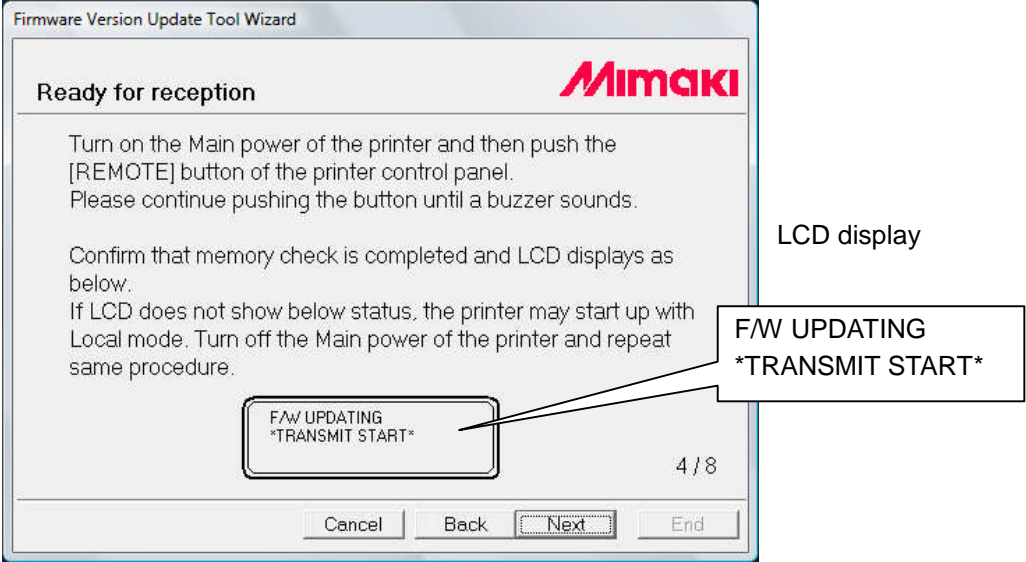
5) Connect the cable and click [Next].



6) Turn on the Main Power (*1) of the printer and immediately push **REMOTE** button on the control panel. After the beep, release **REMOTE** button. (**RAM CHECK(**) will display for a while.)

*1 Update mode starts only when turned on the printer from the main power.

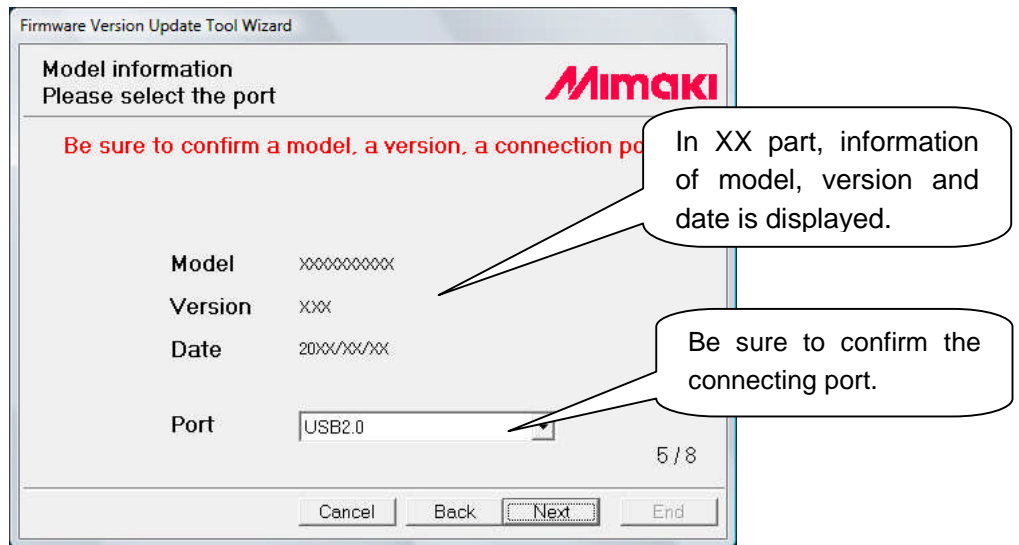
Confirm that Printer LCD displays same status as below.



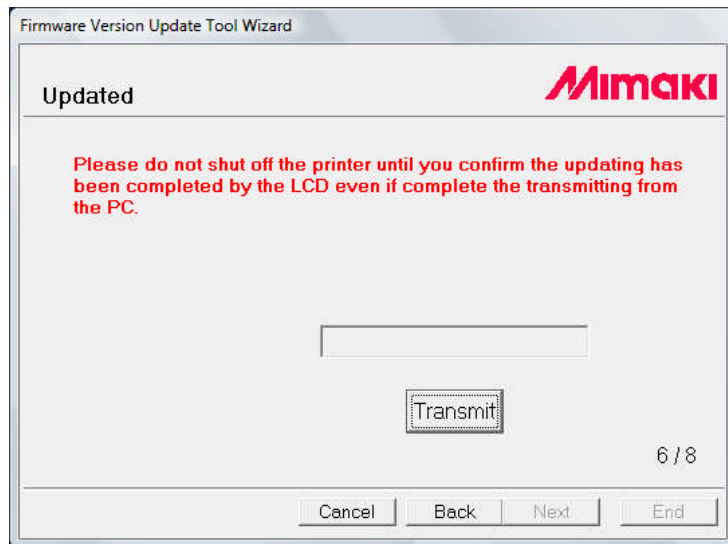
After confirm the status, click [Next].

If above status is not displayed or another status is displayed, reboot the printer and repeat the procedure from 1).

- 7) Connection port between printer and computer is selected automatically.
Confirm the port, model and version then click [Next].

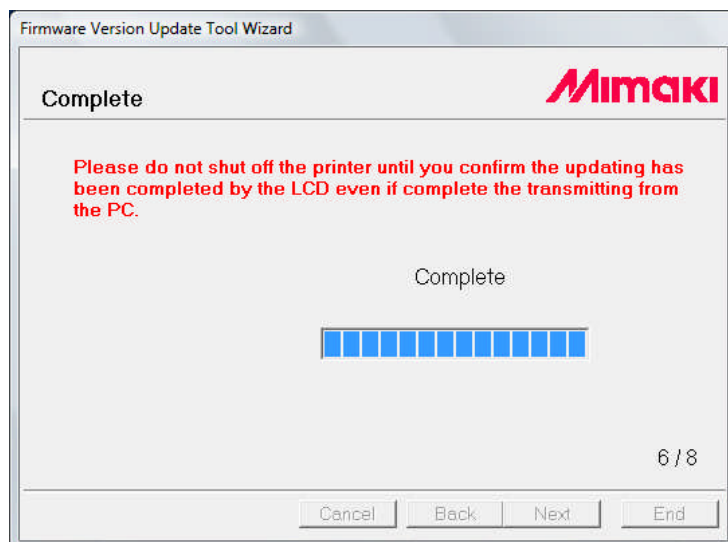


- 8) Click [Transmit]



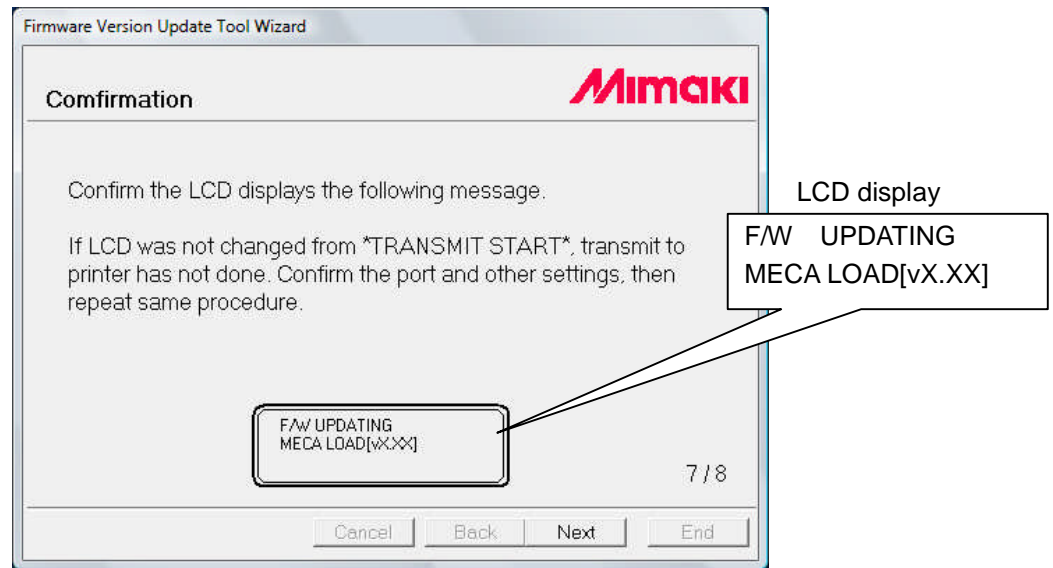
- 9) Confirm that Transmit has completed.

Do not turn OFF the printer even computer screen shows complete.
Make sure to confirm the printer LCD at procedure 10) before turn OFF the power.



- 10) When complete the firmware transmits to the printer and finish download, printer makes beep sound. Confirm the LCD status and click [Next].

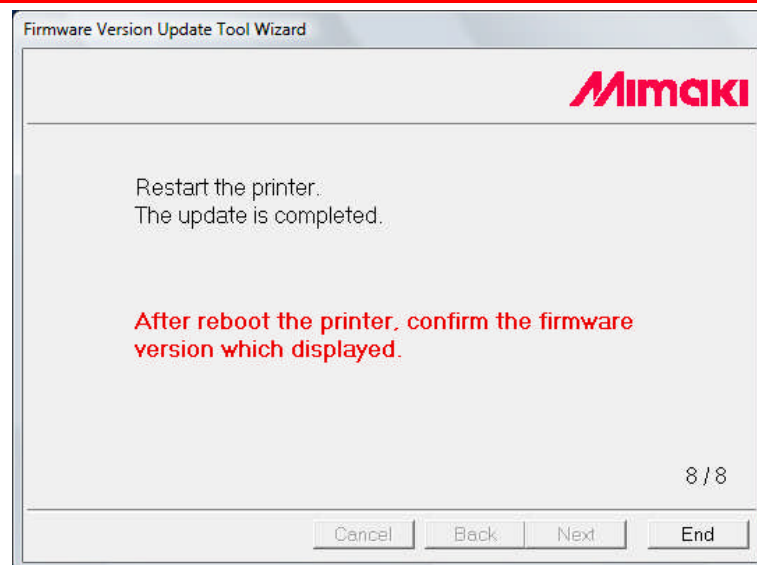
Confirm that Printer LCD displays same status as below.



In [X.XX], new version is displayed.

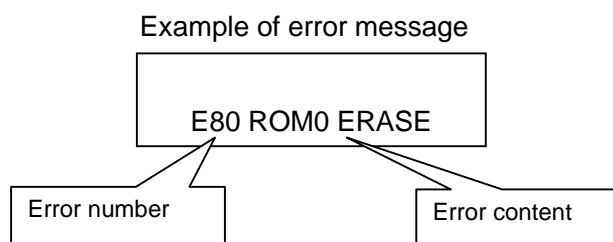
- 11) Click [End] then turn off the main power and reboot the printer to complete the update.

After reboot the printer, confirm the firmware version which displayed.



[Caution]

1. When trouble occurs on the printer, below message is displayed on the LCD. In that case, please contact to a local dealer.



2. In case the wizard could not start (the program could not execute), configure BAT file type by MS-DOS Batch File.

[Contact us]

Please contact to a local dealer or access to our website.

<http://www.mimaki.co.jp/english/top/index.php>