



* Media width



DYE SUBLIMATION

DIRECT OR TRANSFER PRINTING

PRINT SPEED : UP TO **60.3** M²/H

4 / 6 COLOUR MODE

MAX. RESOLUTION : **1440** DPI

UNATTENDED CONTINUOUS PRINTING

Highly Productive Dye Sublimation Printer

High speed direct or transfer dye sublimation printing

- Direct print on pretreated fabrics is possible with the ink catcher
- Drying fans rapidly dry the ink seeping through the back of the fabric
- Spray Suppressor System enhances consistency and improves quality

Differences between Direct Printing and Dye-Sublimation Printing

Direct printing

This method enables direct printing on pretreated polyester using dye sublimation inks and post-treatment heating in order to achieve the highest quality and bright vivid colours. Transfer paper is not needed, saving costs especially when longer runs are printing.

Transfer printing

In dye sublimation transfer printing, the image is printed onto transfer paper. After printing, a heat press or a calendar is needed to fix the image onto the substrate. This process causes the dye particles of the image to sublimate. The advantage of transfer printing is the high quality and durable output for both polyester based materials and hard substrates.

Features

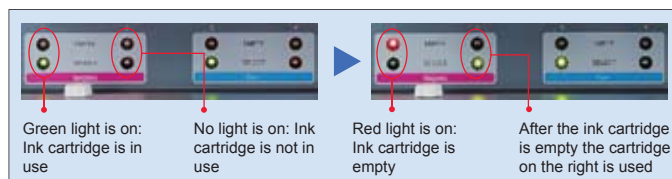
- Maximum print speed of 60.3 sqm/h (540 x 720 dpi, 4 pass, 4-colour mode, bi-directional)
- 4 high speed print heads in 4 staggered rows, enabling high speed printing
- Automatic Media feeder (AMF) for stable feeding of heavy media up to 130 kg
- Uninterrupted Ink Supply System (UISS) provides for unattended continuous printing
- Mimaki Bulk Ink System (MBIS) lowers ink costs (optional)
- Nozzle Checking Units (NCU) enables savings and avoids extensive waste (optional)
- Improved operation and quality with the new Mimaki's Spray Suppressor System

Print speed

Printing speed (4-colour mode, bi directional)			Printing speed (6-colour mode, bi directional)		
540 x 720 dpi	4 pass	60.3 m ² /h	540 x 720 dpi	8 pass	35.3 m ² /h
540 x 1080 dpi	6 pass	43.4 m ² /h	540 x 1080 dpi	12 pass	24.9 m ² /h
720 x 1080 dpi	12 pass	20.0 m ² /h	720 x 1080 dpi	12 pass	20.0 m ² /h
720 x 1440 dpi	16 pass	15.7 m ² /h	720 x 1440 dpi	16 pass	15.7 m ² /h

Uninterrupted Ink Supply System (UISS)

When an ink cartridge runs out, another cartridge automatically begins to supply ink to prevent interruption of printing. A maximum of 1760* ml ink per colour can be loaded at once. Ink cartridges can be changed during printing and unattended overnight continuous printing is possible.



* Without MBIS. With MBIS, a maximum of 2 x 2L per colour can be loaded.

Specifications

Item	Specifications
Print head	On-demand Piezo head
Ink	Dye sublimation ink (BL, M, Y, K, NK, LBL, LM)
Ink set	4-colour mode: 4 ink cartridges per colour 6-colour mode: 2 ink cartridges per colour (4 cartridges for M & BL)
Ink volume	440 ml cartridge, 2000 ml ink pack
Print speed	4-colour mode: 60.3 sqm/h at 540 x 720 dpi (4 pass, high speed in bi-direction) 6-colour mode: 35.3 sqm/h at 540 x 720 dpi (8 pass, high speed in bi-direction)
Effective print area	Width: 3250 mm (textile printing) Length: 3290 (paper printing)
Acceptable media	Pre-treated media for sign use, dye-sublimation media
Media specifications	Size: Max. width: 3300 mm Min. width: 297 mm Thickness: up to 5 mm
	Roll diameter: Outside: less than 250 mm Inside: 3 inch
	Roll weight: Up to 130 kg
Margin of printing area	Right and left margin of the roll: 25-30 mm each (textile) and 25-36 mm (paper) * Same margin is needed when using leaf media
Heater	Pre-heater, post-heater
Power	AC 200V-240V ±10%
Power consumption	Less than 7200 VA
Dimensions (W x D x H)	5170 mm x 1610 mm x 1640 mm or below
Weight	Printer unit: 1250 kg (including ballast weight)
RIP software	Rasterlink Pro 5 SG (RLP5 supports EPS, PS, TIFF, JPEG, and BMP)

• All trademarks or registered trademarks are the property of the respective owners • Specifications are subject to change without prior notice • Compositor's errors reserved •

Take-up and feeding device

JV5-320DS enables secure and accurate feeding of heavy media up to 3250 mm width and up to 130 kg weight. The machine incorporates a tension bar to maintain constant media tension. In addition, a take-up device for adjusting take-up tension is included. Thus, both heavy and less wide media can be used with ease.



Applications

The JV5-320DS is especially suitable for printing outdoor signage on polyester textiles, such as flags and banners, so called soft signage, that are better catered to with water based dye sublimation inks.



Flags



Banners